

Prelude

Thank you for buying the **RC UNIVERS40**. Please read the instructions carefully before using the remote control.

About this Remote Control

RC UNIVERS40 multi-functional remote control is the latest product for TV. It can control almost all TV sets made **world wide**. It has great capacity and various functions. It is powerful enough to operate in long distance. With its beautiful body shape and working indicator, it is easy and convenient for you to handle.

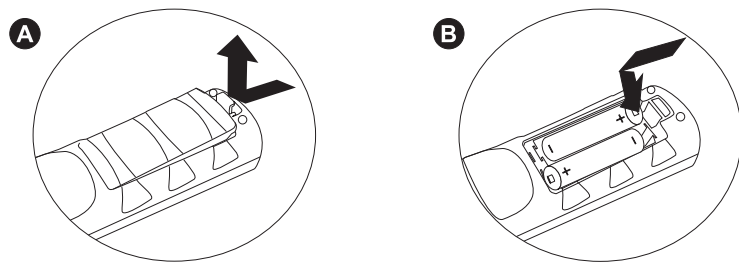
Setting up the Remote Controller

Before start using the remote control, you must first set it up. This manual describes everything you need to know to set up the remote control, including:

- Installing the batteries
- Presetting the remote control with codes for your TV-set
- Presetting steps

Installing the batteries

Open the battery lid and pay attention to the +/- marks. Insert two new AA (size5) batteries (not supplied).



Notes on batteries

Do not take more than 3 minutes to replace the batteries; otherwise, your setting of the code numbers will be erased. Under normal conditions, batteries will last up to 12 months. If the remote control does not operate properly, the batteries might be worn out. Do not mix old batteries with new ones or mix different types of batteries together. To prevent the electrolyte from leaking, remove the batteries when you plan not to use the remote control for a long period of time.

Setting the code number

1. See the supplied "component code numbers" and find the correct 4-digit code for your TV set. If more than one code number is listed, use the number that's listed first to complete the steps below. If your component is not listed, see "searching for the correct code".
2. First press "Set" button continuously, then press "TV" button, and release both buttons simultaneously. At this time the light is on, indicating that the controller is ready to be setup. If the light is not on, you must repeat this step until the light is on.
3. Enter the 4-digit code you have selected for your TV-set. At this time the light is out. If the light flashes **three** times, it means that you have entered the wrong code. You have to enter a new 4-digit code.
4. When the light is out, set-up is finished. You can use the remote control to control your TV-set.

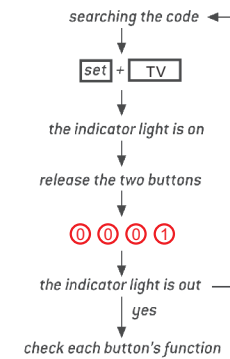
Setting the code

For example:

Suppose your TV-sets brand is Panasonic. The 4-digit code for Panasonic is "002", you should first press "set" button then press "TV" button and release the two buttons and release simultaneously. If the light is on, enter "002". When the light is out, the set up is finished.

First press "set" continuously. Then press "TV" and release both simultaneously.

Enter the 4-digit code.

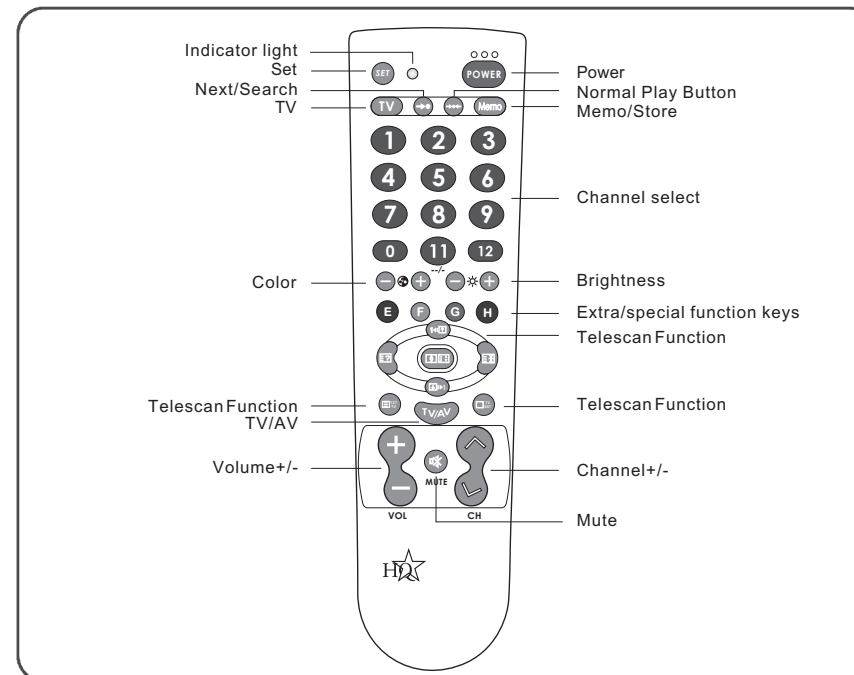


Do not take more than 15 seconds to enter each number when you are setting the code, otherwise you have to enter again!!

Checking if the code number works

1. Turn on the TV by hand, make the TV is in a state of play.
2. Aim the remote control at the TV and press the "power" button to check if it works on your TV.
3. If OK, check if the other buttons of the remote control are operating with the corresponding functions of the component.

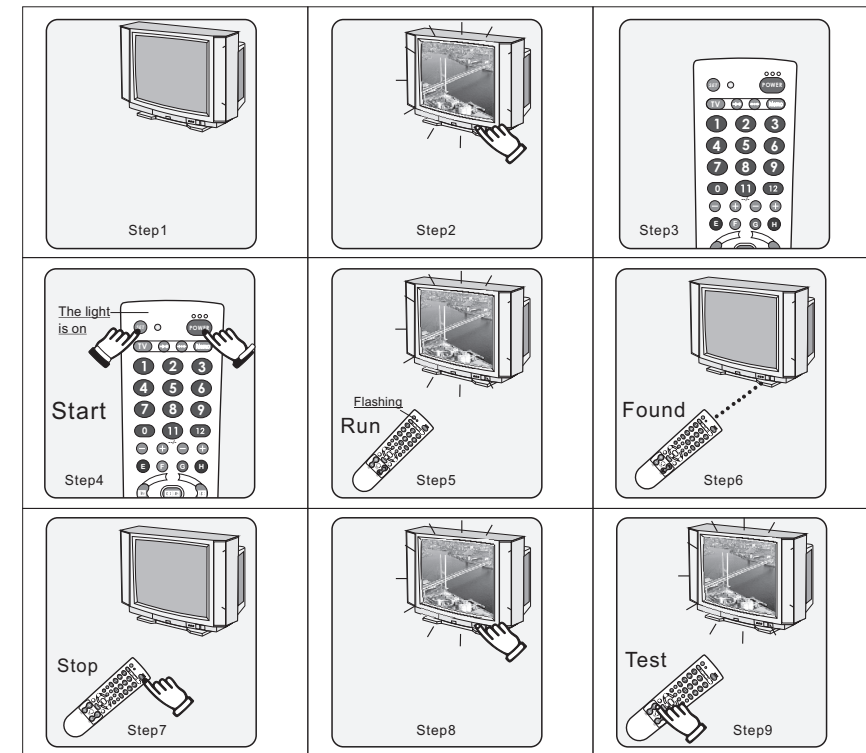
Panel Description



If the controller does not work

- First check the code and your TV brand again. And setup once again.
- Try other listed codes for your TV
- If, after trying all the listed codes for your TV, you still can not get the remote control to work properly, try the research method described in "searching for the correct code".

Searching for the correct code



Note: If you still can not get the controller to work properly, see Trouble shooting.

Trouble Shooting

If you have problems with setting up or using the remote control:

- When setting up the remote control, carefully go through the steps described in "settings the code". If the code that is listed first for your TV set doesn't work, try all the codes for your TV set in the order in which they are listed, if all the codes fail to work try the steps in "Searching for the correct code".
- If you make a mistake in setting up, you should only enter the 4-digit code again as long as the light is still on. But you have to repeat setup if the light is out.
- Check that you are aiming the remote control directly at the TV set and that there are no obstructions between the remote control and the TV set.
- Make sure the batteries you are using are not worn out, and that they are inserted correctly. Note that whenever you remove the batteries or replace them the preset codes are erased from the memory and must be reset.
- Check that your TV set has receive capability. For example: if your TV set did not come with a remote control it probably is not capable of being controlled by a remote control.
- If you not use the remote control properly, the remote control will close down. At this time you have to remove the batteries and wait for 20 minutes. Insert the batteries again and the remote control will function again.

Specifications

Distance: About 8 meters.

Dimensions: 170x50x26MM (h/w/d)

Power requirements: Two size AA batteries.

Mass: approx. 80 g. (Not including batteries)

Service

If you have troubles in using the remote control and the "trouble shooting" can not help you, please contact us. Please don't open the remote control by yourself. We will not take the responsibility if you open it by yourself.