

AIRAM

Powered by

MEGAMAN®

Classic A65 no. 4711405



Instruction Manual

www.ingenium.cc



General

Dark living is just two steps away.

1. Install *INGENIUM®* BLU LED lamps into your existing fixtures
2. Download the *INGENIUM®* BLU app
3. Control your lighting using your smart device

Features include:

Power

Turn the lights on and off

Dimming

Adjust brightness level with linear dimming functions

Timer

Pre-set the time to light up the lamp from lowest to full brightness

Grouping

Control lighting devices room-by-room

Scenes

Set programmes for your favourite settings for repeated use

INGENIUM® BLU with the latest Bluetooth 4.0 technology is a step forward for high quality living. Simple, stylish and intelligent, its advantages include easy installation, availability of direct LED retrofit, wireless compatibility, dimmable without dimmer, precision scene setting and greater energy saving using the app.

Bluetooth version	4.0
Expected coverage	10 metre
Maximum number of lamps / modules to be connected	4 pieces in each covered area
Maximum number of groups	8 groups per app
Maximum number of lamps per group	4 pieces in each group
Maximum number of scene set per group	4 scenes in each group
Control unit	Smart device with app (iOS or Android)
Network topology	Star
Applications	Household use, showroom, lounge, function room, reception area, etc.

MEGAMAN®

Installation

Lamps

INGENIUM® BLU LED lamps have an integrated Bluetooth module so you can simply remove the existing lamp and install the *INGENIUM®* BLU LED lamp, no additional device or wiring is needed.

Note:

INGENIUM® BLU LED lamps operate in 220V to 240V. Make sure *INGENIUM®* BLU LED lamps are not installed in dimming circuitry to avoid malfunction.

App

Download the *INGENIUM®* BLU app to your smart device from iOS App Store or Android Google Play Market.



For iOS users



<https://itunes.apple.com/hk/app/INGENIUMBLU/id900416627?mt=8>



For Android users



<https://play.google.com/store/apps/details?id=cc.megaman.led>

Supported Devices

iOS Devices

(Recommended iOS version 6.0 or above)
iPhone 4S or later
iPad (3rd generation or later)
iPod Touch (5th generation)
iPad Mini (all generations)

Android Devices

(Recommended Android version 4.3 or above)
Samsung Galaxy S4
Nexus 7 (2013)

Note:

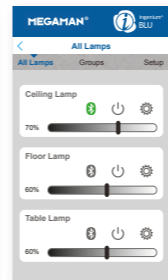
These are verified models which can perfectly work with the APP but not limited to them.

MEGAMAN®

Operation

Let's Start

Welcome to the *INGENIUM®* BLU smart lighting control application. In the following chapter, we will go through all of the app's functions.



Automatic Pairing

In order to control your *INGENIUM®* BLU LED lamps, you first have to pair them to your smart device. Please follow the following steps for the automatic pairing.

Restart the lamp (switch off and then switch on)
Open the *INGENIUM®* BLU app within 30 seconds
Press "START" button on the welcome page of the *INGENIUM®* BLU app, you may notice that the Bluetooth symbol on of your device will fast flash, which means the app is trying to connect with the *INGENIUM®* BLU LED lamps within covered area.

Tap on the Bluetooth icon next to the lamps in "All Lamps" list

Note:

Each lamp has a unique code (i.e.: Bulb 06d4). It is a default name of a lamp and can be changed in the setting option.

Pairing is needed to be done one time only for each lamp.

MEGAMAN®

Control a Lamp

Connecting to your lamps

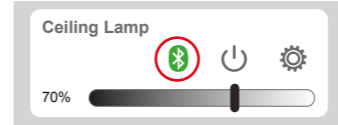
After pairing, simply press the Bluetooth icon in dark grey to get connection, the icon flashes with green during the connection, and become steady green when the lamp and smart device are connected.

The colour of the Bluetooth icon shows the connection status. There are 3 statuses:

Dark Grey
A paired lamp exists in cover area and the lamp is ready for connection. Press the Bluetooth icon to connect the lamp and smart device.

Green
The lamp is connected and it is ready to be controlled. Press the Bluetooth icon to disconnect.

Light Grey
The lamp does not exist in the cover area or not power on.

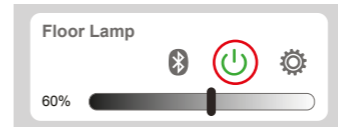


Switch On/Off

Press power icon to turn on or off the *INGENIUM®* BLU lamp.

Dark Grey
The lamp is power off. Press the button to turn the lamp on.

Green
The lamp is power on. Press the button to turn the lamp off.



Dimming Control

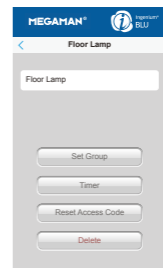
Slide the dimming bar to adjust the dimming level of the lamp. The number beside the dimming bar is to indicate the dimming percentage from 1% to 100%.



MEGAMAN®

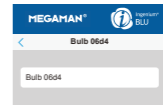
Setting Options

Tap the settings icon to edit the settings of an individual lamp.



From here you can:

Rename a Lamp



Set Group

Add current lamp into an existing group. More details will be covered in "Create a group" chapter.

Timer

Set a timer to switch on a lamp. More details will be covered in "Timer" chapter.

Reset Access Code

The access code is used for pairing a lamp with smart device. Resetting the code will un-pair the lamp from all linked smart devices.

Delete

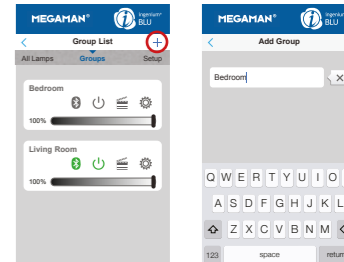
Tapping this button will un-pair the lamp from your smart device, but not affect the pairing to other smart devices. The lamp will be removed from the "All Lamps" list and "Groups" list.

MEGAMAN®

Create a Group

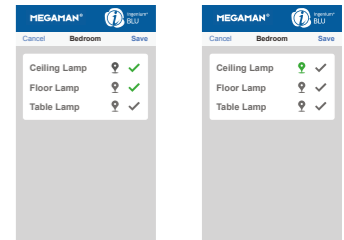
Tap "Groups" to go to the "Group List", and tap the "+" button to create a group.

This will open the "Add Group" page. Simply enter a name to create a new group.




Select the lamps to be added into this group by tapping next to the lamps.

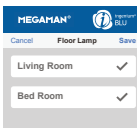
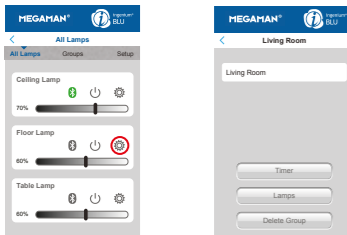
The navigator button can be used to identify the location of lamps. When you press the navigator button, the lamp will fast flash for 2 seconds and reach 100% brightness.




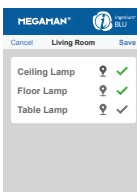
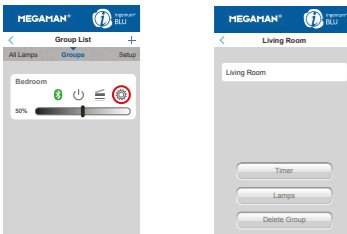
MEGAMAN®

Add Lamps into Existing Group

There are two ways to add a lamp into an existing group.
In "All Lamps" list, tap the setting icon  next to the lamp which you want to add.
Then, tap "Set Group" button and select the group.





2. In "Group List", tap the setting icon  next to the group and select lamps you want to add.

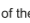


MEGAMAN®

Connect to a Group

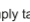
Simply tap the Bluetooth icon  in dark grey to connect to a group. The icon will flash green during the connection. It will become steady green  when the connection is completed.

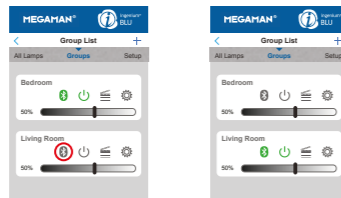


A "I" mark will appear in front of the Bluetooth icon  when there is one or more lamps that cannot be connected within the group. Possible reasons for a failed connection include: lamp positioned, outside the coverage area, the lamp is not powered, interference in crowded environment, etc.

Switching Control of Groups

To optimise the system operation, ONLY ONE group can be connected and controlled at the same time. You can, however, easily switch the connection from the existing group to another group for control.

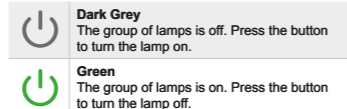
To switch the connection, simply tap the Bluetooth icon  of the group that you would like to switch to. The system will automatically disconnect the existing group and connect to the group intended to switch to. The Bluetooth icon will flash with green and change to steady when the new connection is completed.



MEGAMAN®

Switch Grouped Lamps On/Off

Press power icon  to turn on or off all the INGENIUM® BLU lamps within a group.




Dimming control

Slide the dimming bar to adjust the dimming level of the group of lamps. The number beside the dimming bar is to indicate the dimming percentage from 1% to 100%.



Setting Option

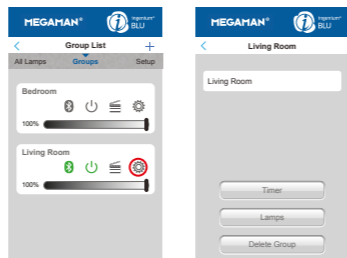
You can edit the settings of your groups by tapping the settings icon .

Within the Group Settings menu you can:
Change the name of the group

Timer
Set a timer to switch on a group of lamps. More details will be covered in "Timer setup" chapter.

Lamps
Select lamps to be included in this group



Delete
Remove this group, but the paired lamps will be still existed in "All Lamp" list.

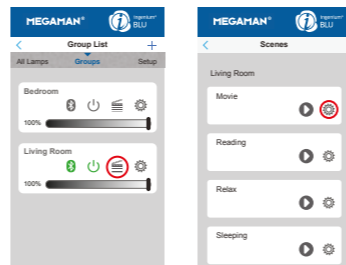


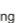
MEGAMAN®

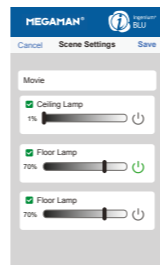
Scene Setup

You can store up to 4 scenes for each group.

To set a scene, press the scene icon , followed by the setting icon  in the "Scenes" page.





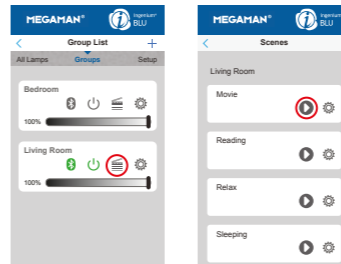
In the "Scenes Setting" page, set your scenes by:
Naming the scenes
Selecting the lamp to be controlled by tapping  next to the lamp
Adjusting the dimming level of the lamps
Setting lamps to be turn ON or OFF



MEGAMAN®

Scene Operation



To play a scene, simply press the scene icon  under the "Group List", and then press the play icon  in the "Scenes" page.





MEGAMAN®

Timer Setup

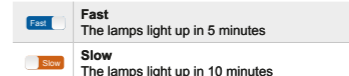
Set a timer to switch on an individual lamp or a group of lamps at a scheduled time, by following these few simple steps.

To set the timer of an individual lamp, tap the setting icon  on the "All Lamps" page. You can also tap the setting icon  on the "Group List" page to set the timer for a group of lamps.

Once you are on the "Timer" page:

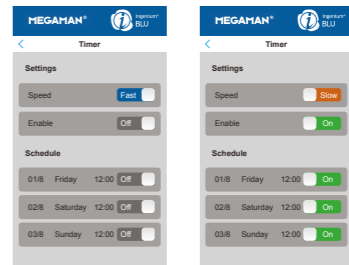
Set the "Enable" option to "on" 
You can also disable the function by selecting 'Off'  here.

This is a wake up timer; so the selected lamps will light up from 10% brightness (minimum) to full brightness 100% gradually, with 2 different speed options:



Note:

The timer can be scheduled for one week, and you can set a different time for each day.
The time set on the "Schedule" is the time the lamps will reach full brightness. Depending on the mode selected, the time set cannot be set less than 5 or 10 minutes in the future.
Each lamp can only record one schedule, the previous setting will be over-written by the later setting.
The setting is stored in the memory of lamp, therefore the lamp will light up as scheduled even if no smart device is connected at that time.
Please note that the lamp will not light up as scheduled if the lamp is switched off at the wall switch.

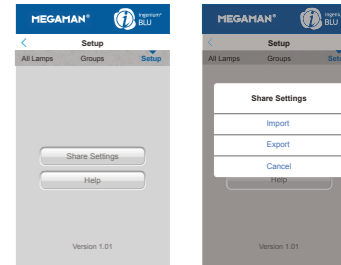


MEGAMAN®

Share Settings

You can share all your current settings from one smart device to another following these simple steps.

1. Go to the "Setup" page, press "Share Settings"
2. Select "Export" from the export device.
3. Within 5 seconds, select "Import" from the import device.
4. Both devices will automatically build up a connection and transfer data
5. After the data transfer, the import device should be closed and re-opened to finalise the setting sharing.



Note:

1. Make sure the Bluetooth function is activated in both devices.
2. Both devices need to be on the same platform. (iOS to iOS, Android to Android)
3. Make sure both devices have sufficient battery power to avoid data corruption.

Help page
The help button will direct you to the FAQ page
www.INGENIUM.cc/support.



Neonlite Electronic & Lighting (HK) Ltd.
31/F., AIA Kowloon Tower, Landmark East,
100 How Ming Street, Kwun Tong, Kowloon,
Hong Kong
Tel: (852) 2305 1722
Fax: (852) 2758 5957
info@megaman.cc

www.megaman.cc